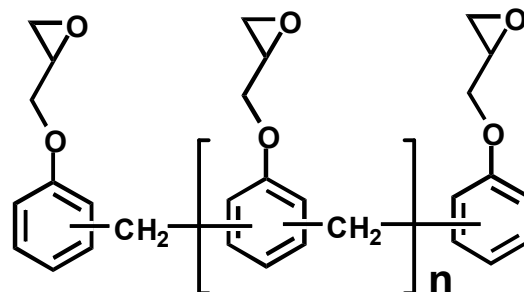


## PHENOL NOVOLAC TYPE EPOXY RESIN N-700 SERIES

*EPICLON N-700 series are the novolac epoxy resins with multi epoxy group functionalities derived from phenol-formaldehyde novolac. N-700 series provide tightly cross-linked cured systems with more excellent heat resistance compared with the conventional bisphenol-A based resins.*



### Product Line

EPICLON <sup>®</sup>	N-730-S	N-740	N-770	N-775
Average Functionality <small>per molecular</small>	2.5	3.5	6.0	6.5
State	High-viscosity liquid	Semi-Solid	Solid	Solid
E.E.W. <small>g/eq.</small>	170 - 190	170 - 190	180 - 200	180 - 200
Softening point <small>°C</small>	—	—	65 - 75	70 - 80
Viscosity 25°C <small>dPa.s</small>	250 - 1,000	H - K *	—	—
52°C <small>dPa.s</small>	—	( 250 - 800 )	—	—
150°C <small>mPa.s</small>	—	—	350 - 600	600 - 900
Hydrolyzable chlorine <small>%</small>	< 0.05	( < 0.15 )	< 0.05	< 0.05

\* 60%solid in Butyl carbitol/ Gardner viscosity

Hydrolyzable chlorine (easily hydrolyzable one): 2g/Dioxane 20ml + 1mol/l KOH 5ml, reflux 15min.

Values in this table are not specifications, but actual.