

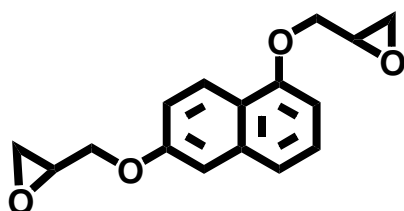
EPICLON[®] HP-4032D

Distilled naphthalene type liquid epoxy resin

General description

EPICLON[®] HP-4032D is the molecular distilled type based on **HP-4032**, designed to reduce viscosity and impurity chloride content and improve color (from blown to yellow). This product provides the highest level of curability and Tg in all liquid epoxy resins. So this product is suitable for the high advanced electronics applications; such as glob top and under fill types of encapsulant, high multilayer printed circuit board.

Chemical structure



Typical properties*

Appearance	Liquid(Crystalline)
Epoxy equivalent, g/eq	142
Viscosity, 25°C, mPa.s	23,000
Total Cl content, ppm	900

* Typical properties; not to be construed as specifications.

Typical formulation

Epoxy resin : **EPICLON[®] HP-4032D** (46.1phr)
 Hardener : Methyl tetra hydrophthalic anhydride (**EPICLON[®] B-570**, 53.9phr)
 Accelerator : Benzyl dimethyl amine (BDMA, 0.8phr)
 Curing schedule : 110°C for 3hr + 165°C for 2hr

Cured resin properties

Gel time, 150°C, sec.	90
Tg by DMA, °C	167
Moisture absorption, 300hr, %*,	0.85

* 85°C/85%RH

Handling

Warning! Skin irritation may be caused for some person. Please use the protection implements, safety goggles, gas mask, safety gloves and safety clothes.

Storage

EPICLON[®] HP-4032D has a shelf-life of at least 6 month if it is stored in a cool, dry area.

Read The Material Safety Data Sheet Before Handling, Storing or Using This product.

Rev.2008.4

Items mentioned in this information are for customers' reference and limited to certain examples although they are based on the most reliable data obtained by our company. It is hoped that customers make the best use of these products after careful examination.

<http://www.dic.co.jp/en/products/epoxy/index.html>

DIC Corporation