

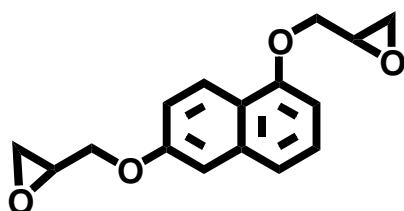
# EPICLON<sup>®</sup> HP-4032

## Naphthalene type liquid epoxy resin

### General description

**EPICLON<sup>®</sup> HP-4032** is the semi-solid type of epoxy resin with naphthalene skeleton. This product surpasses conventional BPA type in curability, heat resistance and mechanical property, and provides both of higher Tg and higher adhesive due to its lower internal stress. This product is suitable for uses in advanced electronics applications; such as solid and liquid types of semiconductor encapsulant and printed circuit board and so on.

### Chemical structure



### Typical properties

Appearance	Semi-solid
Epoxy equivalent, g/eq	151
Viscosity, 25°C, mPa.s	107,000
Total Cl content, ppm	1,500

\* Typical properties; not to be construed as specifications.

### Typical formulation

Epoxy resin : **EPICLON<sup>®</sup> HP-4032** (47.6phr)  
 Hardener : Methyl tetra hydrophthalic anhydride (**EPICLON<sup>®</sup> B-570**, 52.4phr)  
 Accelerator : Benzyl dimethyl amin (BDMA, 0.8phr)  
 Curing schedule : 110°C for 3hr + 165°C for 2hr

### Cured resin properties

Gel time, 150°C, sec.	90
Tg by DMA, °C	170
Moisture absorption, 300hr, %*,	0.98

\* 85°C/85%RH

### Handling

Warning! Skin irritation may be caused for some person.  
 Please use the protection implements, safety goggles, gas mask, safety gloves and safety clothes.

### Storage

**EPICLON<sup>®</sup> HP-4032** has a shelf-life of at least 6 month if it is stored in a cool, dry area.

Read The Material Safety Data Sheet Before Handling, Storing or Using This product.

Rev.2008.4

*Items mentioned in this information are for customers' reference and limited to certain examples although they are based on the most reliable data obtained by our company. It is hoped that customers make the best use of these products after careful examination.*

<http://www.dic.co.jp/en/products/epoxy/index.html>